

78241
LOW PRESSURE SWITCH

Key Features

- Low Pressure (ullage pressure) fuel switch
- Designed for AW101 and EH101 Helicopters
- 316L Stainless Steel wetted parts
- Designed to meet MIL-STD-810F, DEF STAN 00-35 and DO160E
- Designed in accordance with EU00Q0006J (AW Specification)



Technical Specifications

General

Operating Pressure Range	0.03psig to 0.14psig
Overload Pressure	1.5psig
Burst Pressure	4.5psig
Weight	190g
Dimension	Φ29.0mm, 110.0mm Max Long
Construction / Material	Stainless Steel 316L
Case and End Adaptors	Wetted Parts, Electron – beam welded
Flammability	All materials used have low flammability

Performance / Operation

The low pressure switch measures / senses the ullage pressure (0.03 to 0.14psig) and provides a 28V DC signal to close the refuel/defuel valve.

Switch Actuation Points:

Increasing Pressure: Switch to open state (OFF), when pressure increases in the region between 0.10psig to 0.14psig

Decreasing Pressure: Switch to closed state (ON), when pressure decreases in the region between 0.03psig to 0.05psig

Environmental

Temperature Range:	
Operating:	-45° C to + 70 ° C
Storage:	-55° C to + 90 ° C
Shock	
Operational:	6g 11ms
Crash Safety:	30g 11ms
Corrosion:	Unit made with Stainless Steel 316L to withstand extreme environments
Vibration (Sinusoidal)	5Hz to 2000Hz, Curve N in accordance with AW spec EU00Q0006J
EMC	In accordance with AW specification EU98E0002W
Shelf Life	Not restricted as long as stored with supplied packaging in ambient conditions
Overhaul	None
Service	On Condition

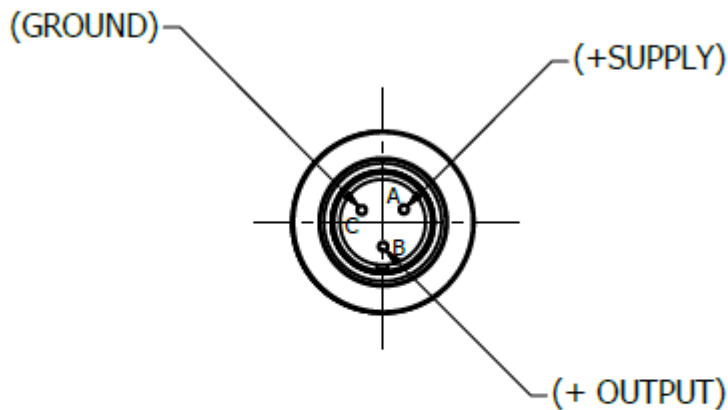
Design authority and manufacture by Barnbrook Systems Limited
Barnbrook Systems reserves the right to alter specifications and design without notice

Data Sheet No
DSD78241 11 13
ISSUE 2

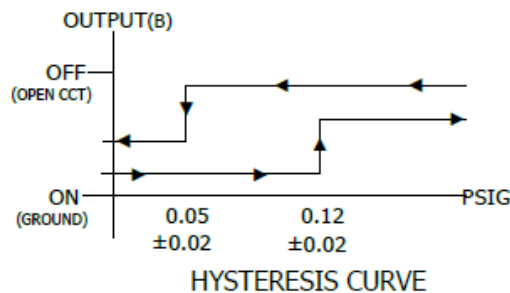
Electrical:

Nominal Operating Voltage	28 VDC
Control Voltage Range	18 – 32 VDC
Maximum Load Voltage	50 VDC
Nominal Operating Current	< 10mA at 28V DC
Load Current	1.0 A
Connector	MIL-C-38999 Series III D38999/25 Shell A Part No.D38999/25YA98PN
Insulation Resistance	>50MΩ @ 50 VDC
Leakage current	< 1mA

Wiring Schematic / Electrical Connection:



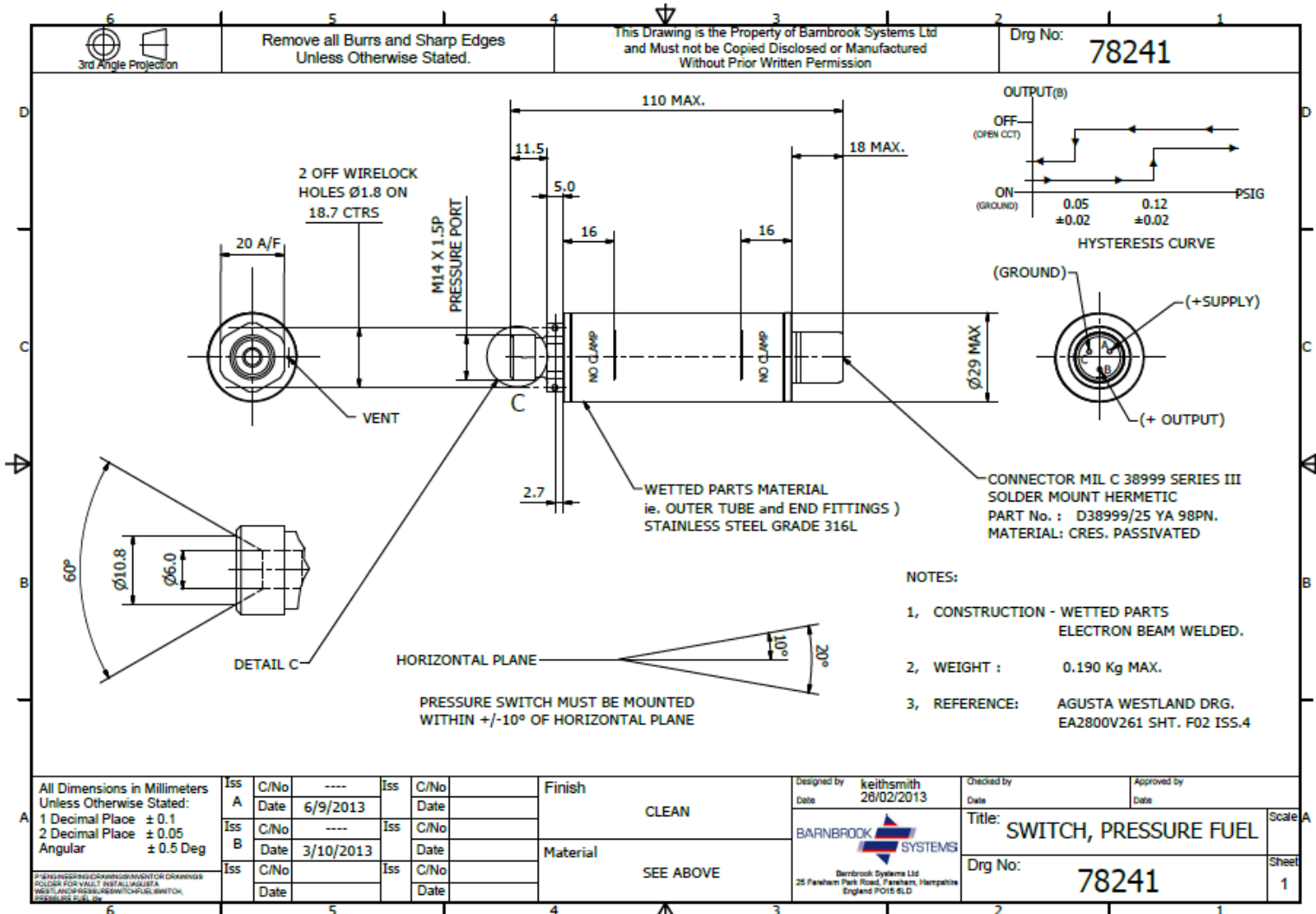
CONNECTOR MIL C 38999 SERIES III
SOLDER MOUNT HERMETIC
D38999/25 SHELL- A
MATERIAL: CRES. PASSIVATED
PART No. D38999/25YA98PN



Design authority and manufacture by Barnbrook Systems Limited
Barnbrook Systems reserves the right to alter specifications and design without notice

Data Sheet No
DSD78241 11 13
ISSUE 2

INSTALLATION LAYOUT



Design authority and manufacture by Barnbrook Systems Limited
Barnbrook Systems reserves the right to alter specifications and design without notice

Data Sheet No
DSD78241 11 13
ISSUE 2